



14

Eclaté des pièces détachées

Illustrated Part Guide - Explosionszeichnung



## HC 14 COQUES/HULL/RUMPF

	droite/right/rechts	gauche/left/links
Std	14056102	14056101
SE	14056172	14056171

Sac accastillage/Rig bag/Takelage sack :

14070300 = 14STD

14070303 = 14LE

14070301 = 14T

Sac de cordages/Rope bag/Leinesack :

14070400 = 14STD/LE

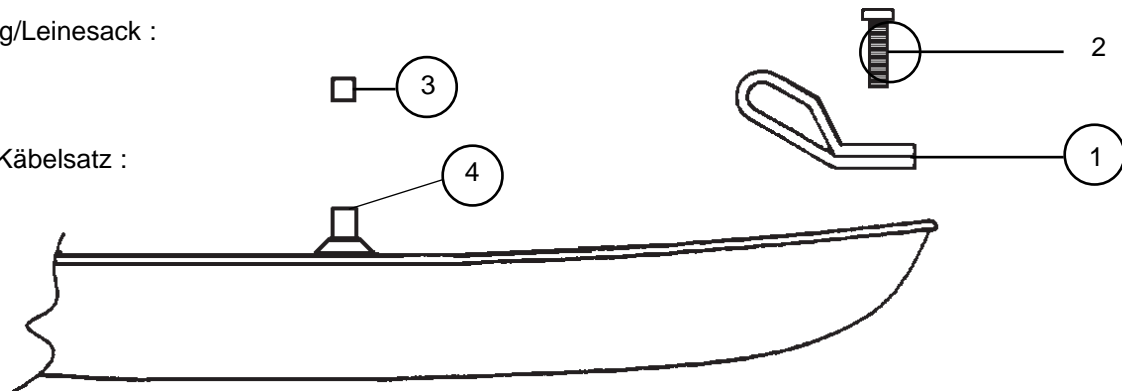
14070401 = 14T

Jeux de câbles/Cable set/Käbelsatz :

14070500 = 14STD

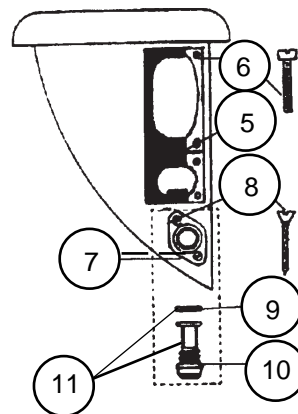
14070505 = 14LE

14070501 = 14T



- |                        |  |
|------------------------|--|
| 1- 16056022:           | Ferrure étai<br>Bow tang<br>Bugbeschlag                          |
| 2 - 99220950:<br>(x10) | Vis TC 8x40<br>Screw TC 8x40<br>Schraube TC 8x40                 |
| 3- 14056008:           | Sceau PVC<br>Foam plug<br>Mastabdichtung PVC                     |
| 4 - 99056011 :         | Tube aération pylône<br>Pylone aeration tube                     |
| 5 - 14000030:          | Fémelot<br>Gudgeon<br>Ruderbeschlag                              |
| 6- 99220855:<br>(x10)  | Vis TC fémelot<br>Screw TC stainless<br>Schraube Heckbesch       |
| 7 - 99056012:          | Platine bouch.vidange<br>Drain plate<br>Platte Ablassschraube    |
| 8- 99220845<br>(x10)   | Vis bouch.vidange<br>Drain plug screw<br>Schraube Ablassschraube |

- |                         |   |
|-------------------------|---|
| 9 - 99220048:<br>(x10)  | Joint de vidange<br>Drain gasket<br>Dichtung Ablassschraube         |
| 10 - 99056232:<br>(x10) | Bouchon de vidange<br>Drain Plug<br>Ablassschraube                  |
| 11- 99220043<br>(x10)   | Joint + bouchon<br>Gasket + drain plug<br>Ablassschraube + Dichtung |



12 - Embout noir/Black stripe end cap/Dekorstreifen schwarz :

99056051 : arrière droit ou avant gauche/rear right or front left/hinten rechts oder vorne links

99056099 : arrière gauche ou avant droit/rear left or front right/hinten links order vorne rechts

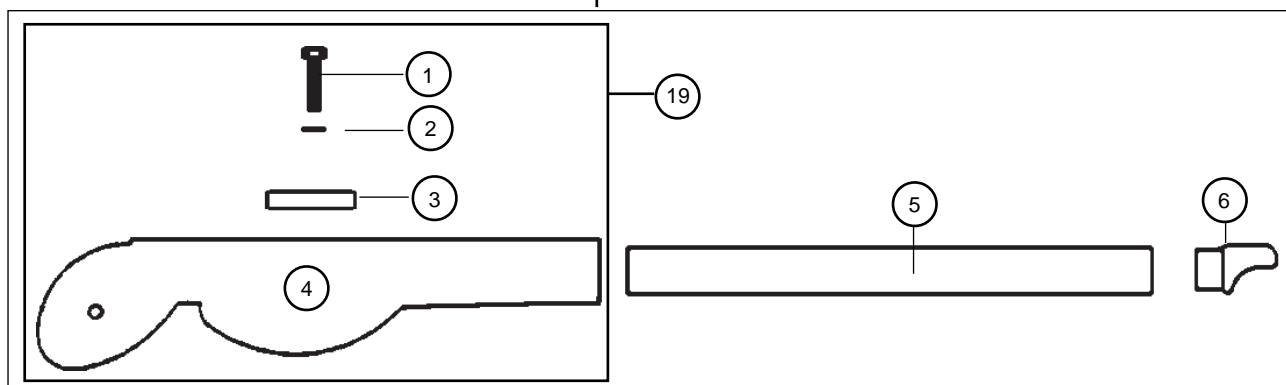
13 - 17056081: Bande Molokai coque/Molokai hull strip/Dekorstreifen Molokai für Rumpf

# HC 14

## Safran/Rudder/Ruderblatt

### GOUVERNAIL COMPLET/RUDDER ASSEMBLY RUDER KOMPLETT

14062101 : Gauche/Left/Links  
14062102 : Droit/Right/Rechts



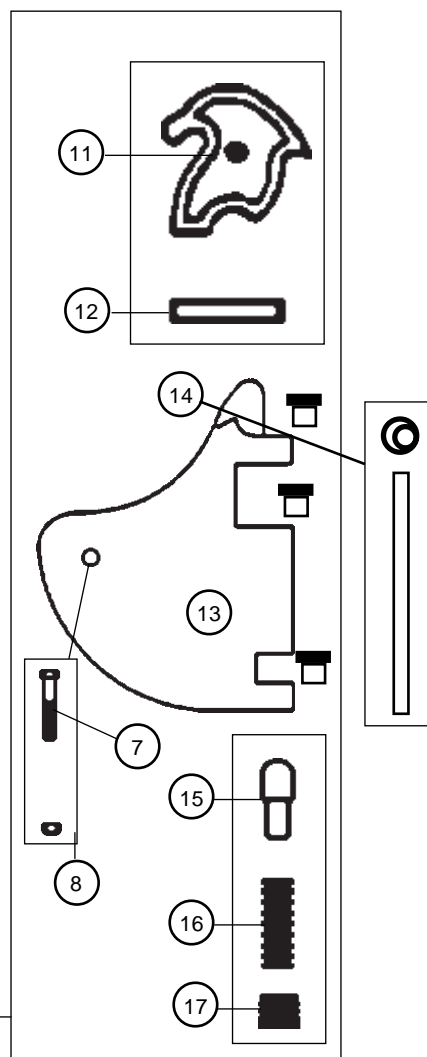
1 - 99220930 (x10) : Vis casting Casting Bolt Schraube Gußteil	5 - 14062150 : Tube gouvernail nu noir Tiller tube black Ruderrohr schwarz roh	8 - 99056239 (x10) : Ecrou indesserrable Nylstop nut Selbstsichernde Mutter
2 - 99220750 (x10) : Rondelle Washer Unterlegscheibe	6 - 99000005 : Embout à rotule Tillerend cap Pinnenendstück	9 - 16062110 (Lexan): 99502140 (WK) :Lame safran Rudder blade Ruderblatt
3 - 14061122 : Platine dural Cam stop plate Platin Rudergußteil	7 - Vis de safran/Rudder bolt/Schraube Ruderblatt ABS = TH 8x55 : 99220940 (x10) White Knight = TH 8x60 : 99220880 (x10)	10 - 99502130(WK): 99502160 (ABS) :Insert lame de safran Sheave pin rudder blade Bolzen Ruderblatt
4 - 14000045 : Casting supérieur Upper casting Oberes Rudergußteil		11 - 14061183 (x10) : Came safran Plastic Cam Rudernock

99220725 (x10) Rondelle  
nylon/Nylon washer



- 12 - 99220620 (x10) : Goupille élastique  
Rudder cutter pin  
Sprengbolzen
- 13 - 14000155 : Casting inférieur néoprène  
Lower casting w/ néop  
Ruderkopf m. Neoprene
- 14- Aiguillot + anneau brisé/Rudder pin + split  
ring/Ruderbolzen + Ringsplint :  
Alu : 16080345 (x10)  
Inox : 16070370 (x10)
- 15 - 14061106 (x10) : Pene safran  
Plunger  
Gegenstück Ruderknock
- 16 - 99220685 (x10) : Ressort de Gouv.  
Rudder spring  
Ruder-Feder
- 17 - 99220825 (x10) : Vis safran delrin  
Delrin screw  
Delrinschraube
- 18 - 14062120 : Casting inférieur monté  
Lower casting assembly  
Ruderkopf montiert unten
- 19 - 14062130 : Casting supérieur monté  
Upper casting assembly  
Ruderkopf montiert oben
- 20 - 14062111 : Bras gouv. D complet  
Rudder arm right compl.  
Ruderarm rechts kompl.
- 14062112 : Bras gouv. G complet  
Rudder arm left compl.  
Ruderarm links kompl.

99220128(x10) Entretoise  
plastique/Plastic bushing/  
Distanzhülse Plastic

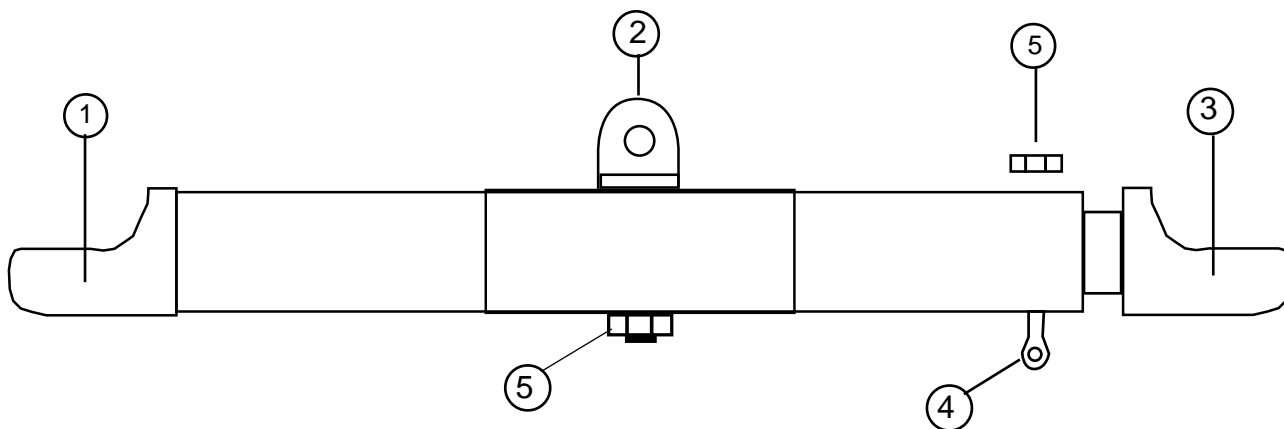


## HC 14

Barre d'accouplement Tiller crossbar / Anlenkstange

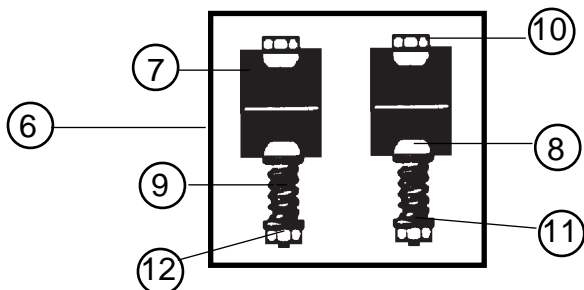
16062200 : Std

16062220 : Renforcée/Reinforced/Verstärkt



- |                    |   |
|--------------------|---|
| 1 - 99000005:      | Embout à rotule<br>Tiller end cap<br>Pinnenendstück     |
| 2 - 99220955 (x4): | Vis violon<br>Violon screw<br>Schraube für Pinnengelenk |

- |                     |  |
|---------------------|--|
| 3 - 99000010:       | Coulisseau réglable<br>Adjustable tiller end cap<br>Gleiter          |
| 4 - 99056269 (x10): | Vis manillon<br>Tiller adjusting screw<br>Schraube                   |
| 5 - 99056239 (x10): | Ecrou indessérable D8<br>Nylstop nut D8<br>Selbstsichernde Mutter D8 |

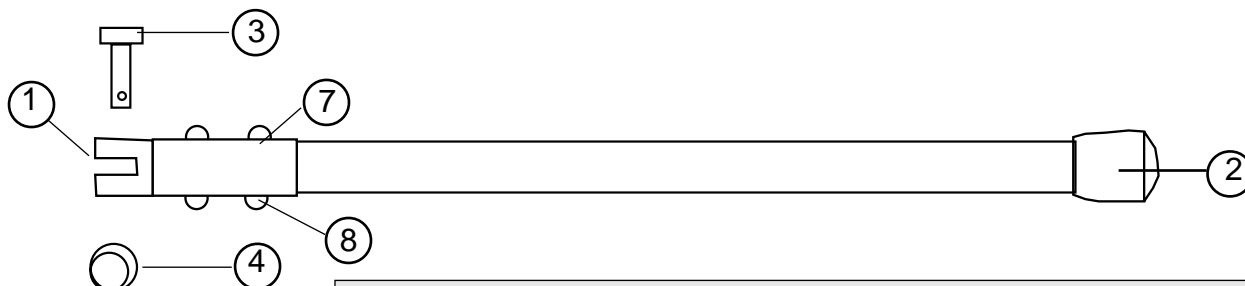


- |                      |   |
|----------------------|---|
| 6 - 99500380:        | Kit d'articulation TCM<br>Tiller connector kit TCM<br>Verbindungsgelenk TCM |
| 7 - 99500331:        | Demi-pallier<br>Rubberspacer<br>Distanzhülse                                |
| 8 - 99220965 (x20):  | Demi-bille nylon<br>Half ball nylon<br>Nylon Halbkugel                      |
| 9 - 99500336 (x10):  | Ressort TCM<br>TCM spring<br>TCM-Feder                                      |
| 10 - 99220875 (x10): | Vis TH 6 x 50<br>TH screw<br>TH Schraube                                    |
| 11 - 99220745 (x10): | Rondelle inox<br>Stainless washer<br>Unterlegscheibe                        |
| 12 - 99056238 (x10): | Ecrou indessérable D6<br>Nylstop nut D6<br>Selbstsichernde Mutter D6        |

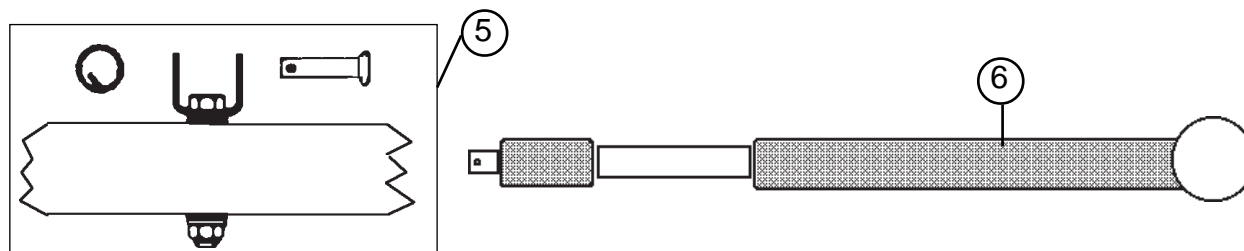
## HC 14

### Stick/Extension/Pinne

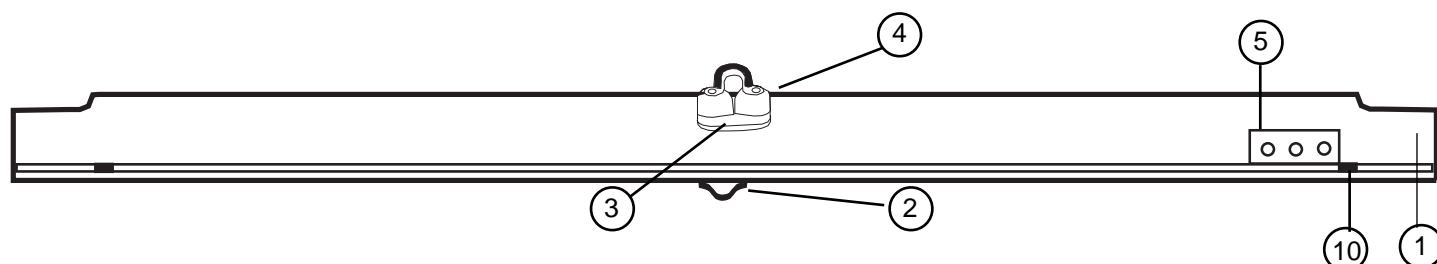
16061301 : Stick fibre de verre/Fiberglass tiller extention  
16062305 : Stick aluminium/Aluminium tiller extension/Aluminium Pinnenausleger



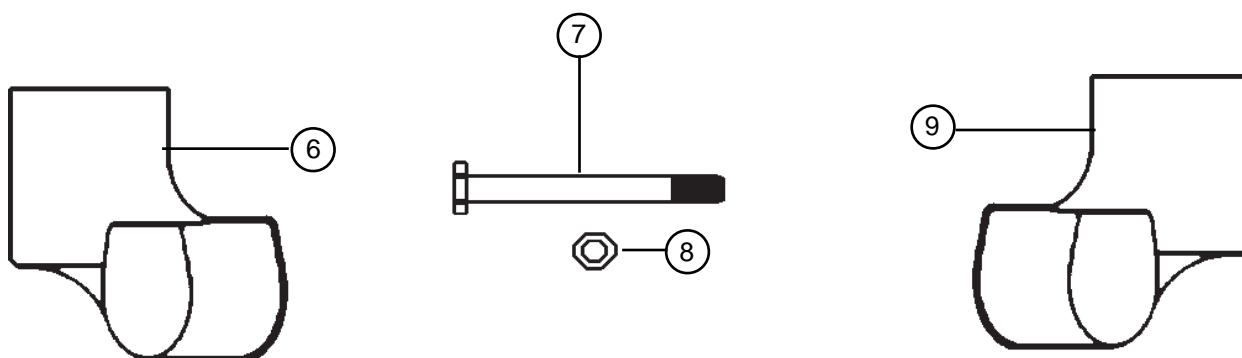
- 1 - 14061321 (x2): Chape d'articulation stick  
Hinge
- 2 - 99056244 (x10): Embout stick fibre  
Fiberglass extension tip  
Pinnenendstück Fiberglas
- 14061316 (x10): Embout stick alu  
Aluminium extension tip  
Pinnenendstück Aluminium
- 3 - 14061241 (x10): Axe percé art. stick  
Clevis pin  
Bolzen Pinnengelenk
- 4 - 99220230 (x10): Anneau brisé  
Split ring  
Ringsplint
- 5 - 99501310: Kit d'articulation stick magnum  
Tiller connector kit magnum  
Pinnengelenk magnum
- 6 - 99502330: Stick télescopique FX4 petit modèle (Kit art. inclus)  
FX4 telescopic extension small (incl. connector kit)  
Teleskop Pinnenausleger FX4 klein (inkl. Pinnengelenk)
- 7 - 99220900 (x10): Vis TH 5 x 25  
Screw TH 5 x 25  
Schraube TH 5 x 25
- 8 - 99056237 (x10): Ecrou indessérable 5  
Nylstop nut 5  
Selbstsichernde Mutter 5



**HC 14**  
**TRAVERSE ARRIERE/REAR CROSSBAR**  
**ACHTERHOLM**  
**14062550**



- |                     |  |
|---------------------|--|
| 1 - 14062510 :      | Traverse arrière droite nue rail intégré<br>Bare rear crossbar integrated rail<br>Achterholm roh mit integrierte Trav.-Schiene |
| 2 - 99220216 (x5) : | Pontet coque traverse<br>Pad-eye<br>Bügel  |



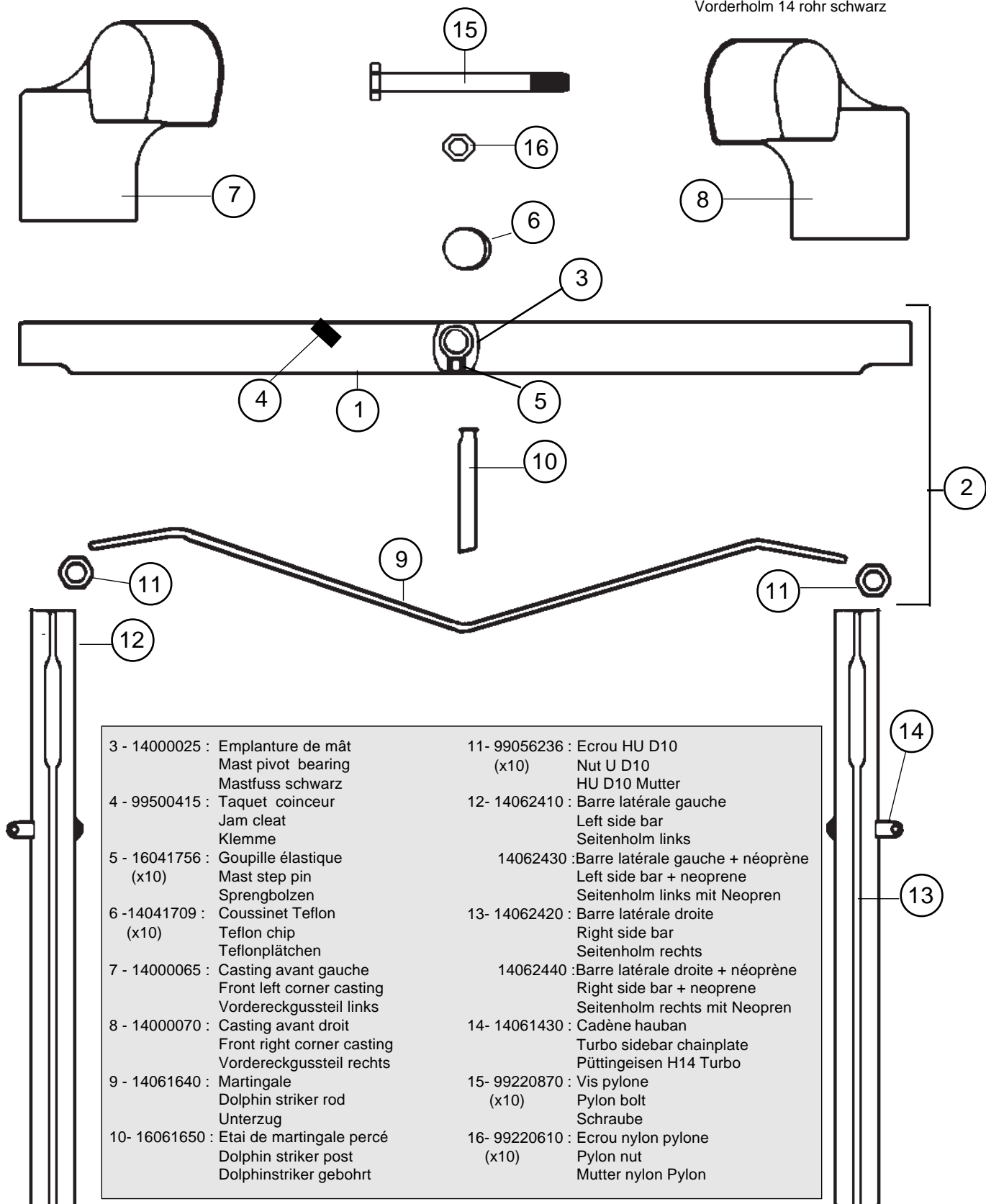
- |                |   |
|----------------|---|
| 3 - 99500900 : | Support tourelle<br>(x2)<br>Swivel cam cleat plate<br>Drehklemme-Platte                           |
| 4 - 99500354 : | Tourelle taquet carbon<br>Swivel cam cleat<br>Drehklemme  |
| 5 - 16062800 : | Plaque traverse pour chariot<br>Plate for traveller car<br>Platte für Traveller                   |
| 6 - 14000055 : | Casting arrière gauche percé<br>Left rear corn. casting drilled<br>Gussteil hinten links mit Loch |

- |                      |  |
|----------------------|--|
| 7 - 99220870 (x10) : | Vis pylône<br>Pylon bolt<br>Schraube   |
| 8 - 99220610 (x10) : | Ecrou nylon pylône<br>Pylon nut<br>Mutter Nylon Pylon  |
| 9 - 14000060 :       | Casting arrière droit percé<br>Right rear corn. casting drilled<br>Gussteil hinten rechts mit Loch |
| 10- 99056242 (x2) :  | Embout Caoutchouc<br>Rubber stopper<br>Gummistopper  |

# **HC 14** **Traverse avant/Front crossbar** **Vorderholm**

- 1 - 14062640 : Traverse avant complète std  
 Front crossbar complete std  
 Vorderholm komplett std
- 2 - 14062650 : Traverse avant Turbo complète  
 Front crossbar complete Turbo  
 Vorderholm Turbo komplett

14062601 : Traverse avant 14 nue noire  
 Front crossbar 14 bare black  
 Vorderholm 14 roh schwarz

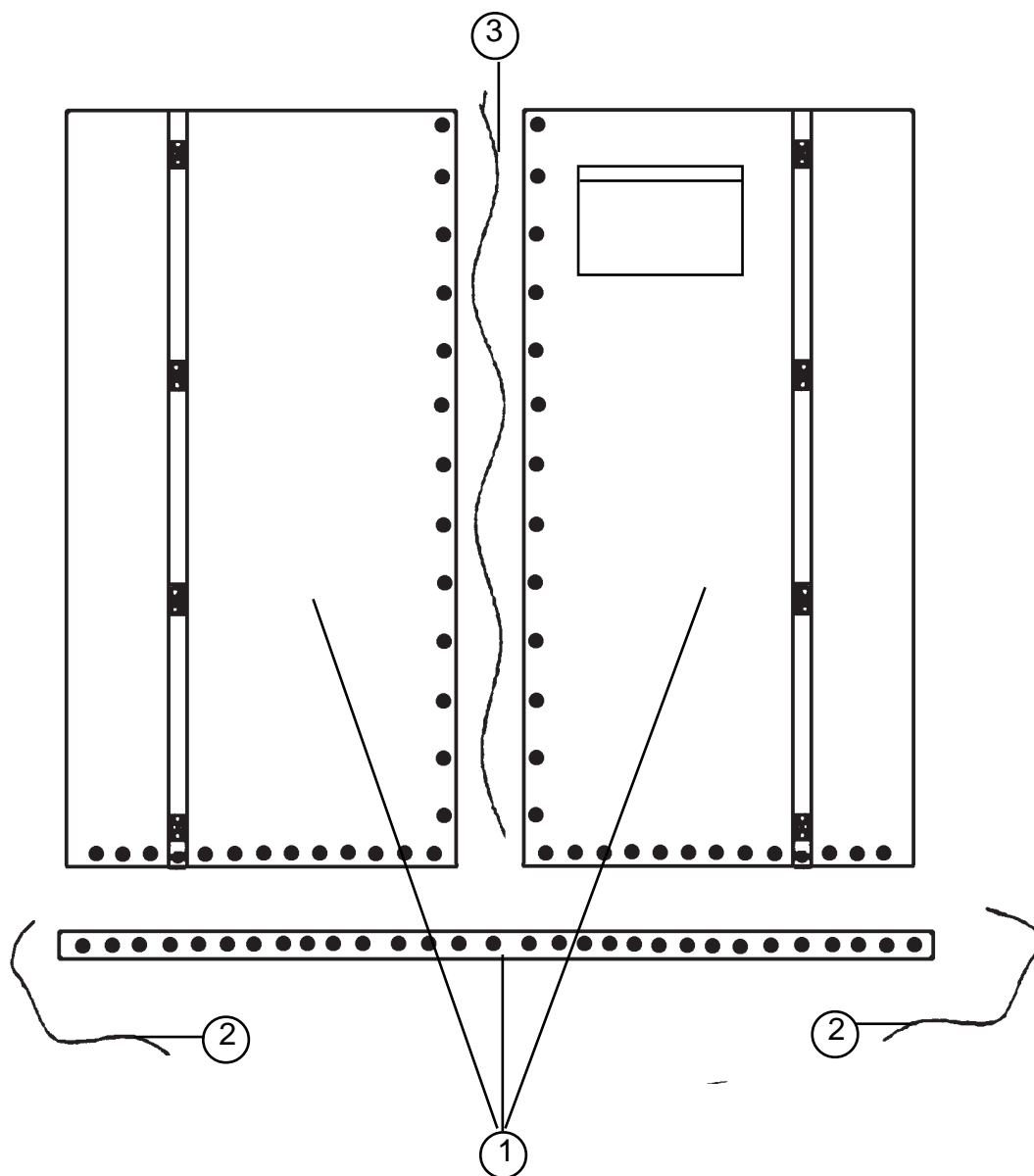


- 3 - 14000025 : Emplanture de mât  
 Mast pivot bearing  
 Mastfuss schwarz
- 4 - 99500415 : Taquet coinreur  
 Jam cleat  
 Klemme
- 5 - 16041756 : Goupille élastique  
 Mast step pin  
 Sprengbolzen
- 6 - 14041709 : Coussinet Teflon  
 Teflon chip  
 Teflonplättchen
- 7 - 14000065 : Casting avant gauche  
 Front left corner casting  
 Vordereckussteil links
- 8 - 14000070 : Casting avant droit  
 Front right corner casting  
 Vordereckussteil rechts
- 9 - 14061640 : Martingale  
 Dolphin striker rod  
 Unterzug
- 10 - 16061650 : Etai de martingale percé  
 Dolphin striker post  
 Dolphinstriker gebohrt

- 11 - 99056236 : Erou HU D10  
 (x10) Nut U D10  
 HU D10 Mutter
- 12 - 14062410 : Barre latérale gauche  
 Left side bar  
 Seitenholm links
- 14062430 : Barre latérale gauche + néoprène  
 Left side bar + neoprene  
 Seitenholm links mit Neopren
- 13 - 14062420 : Barre latérale droite  
 Right side bar  
 Seitenholm rechts
- 14062440 : Barre latérale droite + néoprène  
 Right side bar + neoprene  
 Seitenholm rechts mit Neopren
- 14 - 14061430 : Cadène hauban  
 Turbo sidebar chainplate  
 Püttingeisen H14 Turbo
- 15 - 99220870 : Vis pylone  
 (x10) Pylon bolt  
 Schraube
- 16 - 99220610 : Erou nylon pylone  
 (x10) Pylon nut  
 Mutter nylon Pylon

14062450 : Barre latérale nue  
 Side bar bare  
 Seitenholm roh

## HC 14 TRAMPOLIN/TRAMPOLINE/TRAMPOLIN

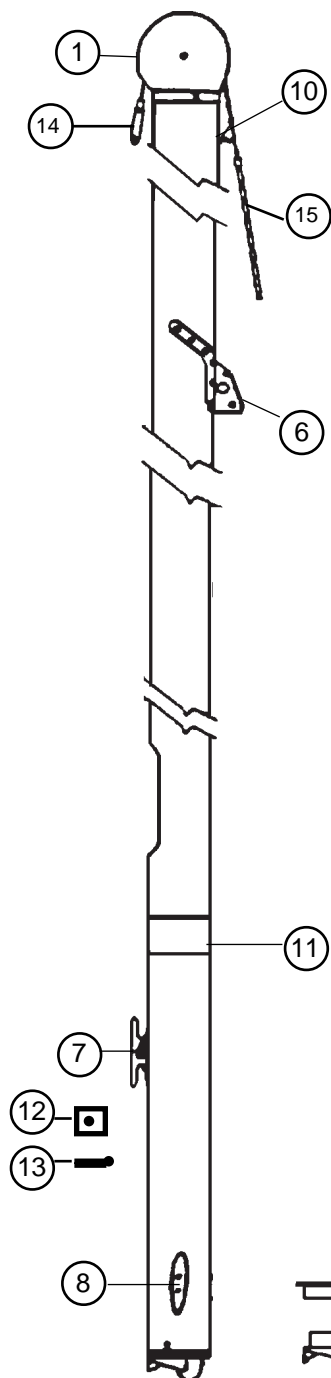


- |   |   |
|---|---|
| 1 - TRAMPOLIN 3 PIECES/3 PIECE TRAMPOLINE/3TEILIGER TRAMPOLIN |   |
| 14025005  | blanc/white/weiss   |
| 14025205  | Bleu/blue/blau  |
| 14025800  | Mesh/Netz   |
|   |   |
| 2 - 14070410 :  | Lacet arrière/Rear trampoline line/Trampolinleine hinten  |
| 3 - 14070440 :  | Lacet central/Center trampoline line/Trampolinleine mitte |



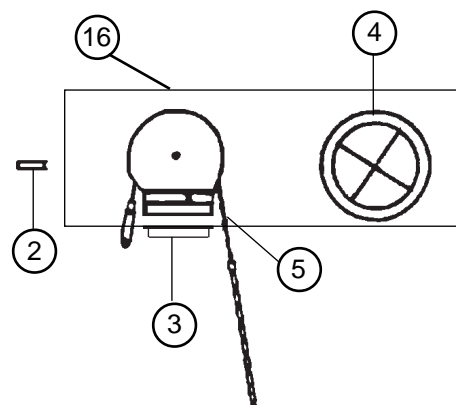
# **HC 14** **Mât/Mast/Mast**

**MAT COMPLET/MAST ASSEMBLY/MAST KOMPLETT**  
**14042700**  
**MAT 2 PIECES/2 PIECE MAST/2-TEILIGER MAST**  
**14042790**



- 1- 14000015: Tête de mât nue  
Bare mast head  
Mastkopf roh
- 2- 14041711: Axe tête de mât  
Mast head sheave pin  
Bolzen Mastkopf
- 3- 14042720: Sceau Mât  
Mast plug  
Mast Abdichtung
- 4- 14041712: Rea 100 mm  
Nylon sheave  
Rolle
- 5- 14041750: Drisse cable GV  
Main halyard shackle  
Grossfall Kabel
- 6- 14041722: Ferrure capelage  
Mast tang  
Mastbeschlag
- 7- 14041720: Taquet étarq amure  
(x10)  
Downhaul cleat  
Klampe

99210075 (x10) :  
Bouchon étanche  
Watertight plug  
Wasserdicht Dichtung



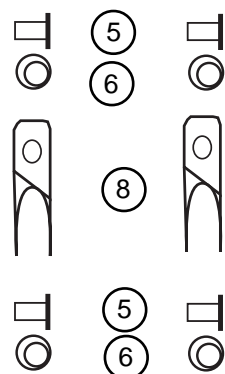
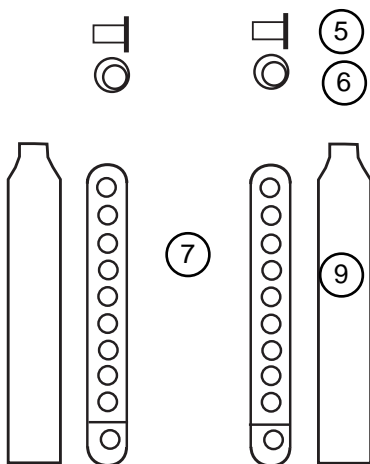
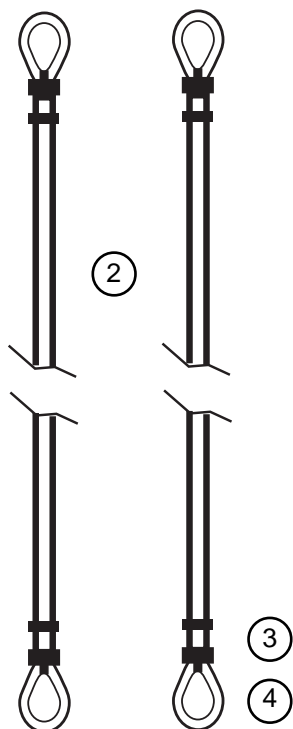
- 14041755 : Manchon mât 2 p  
Sleeve 2p mast
- 14041770 : Kit mât 2p  
2p mast kit  
2teiliger Mast kit

- 8- 99220760: Taquet de drisse  
(x10)  
Halyard cleat  
Niederholer Mastklemme
- 9- 14000020 : Base mât noire  
Black mast base  
Mastfuss schwarz
- 10- 14041721 : Hook  
Halyard hook  
Fallhaken
- 11- 14041723: Autocollant de sécurité  
Mast caution label  
Sicherheitsaufkleber
- 12- 99220052: Ecrou carré amure  
Tack square nut  
Viereckmutter
- 13- 99220765: Vis taquet amure  
(x10)  
Tack cleat screw  
Schraube Heckbesch
- 14- 99220665 : .Manille lyre  
(x10)  
Shackle  
Schäkel
- 15- 14070460 : Drisse cordage grand voile  
Main halyard rope  
Großfall
- 16- 14042710 : Tête de mât + réa + drisse  
Mast head + sheave + halyard  
Mastkopf + Rolle + Grossfall

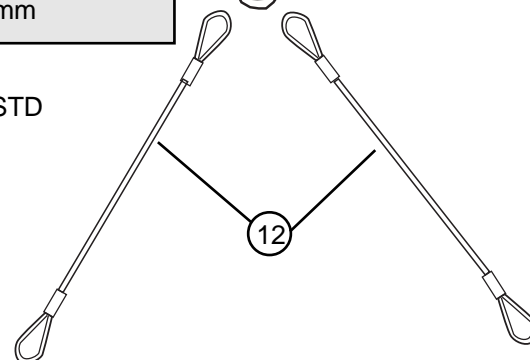
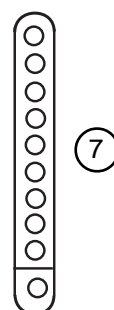
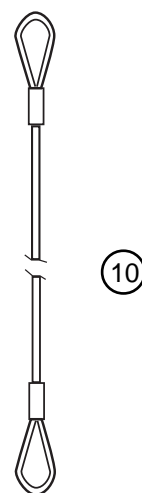


## HC 14

### Cables/Wires/Kabel



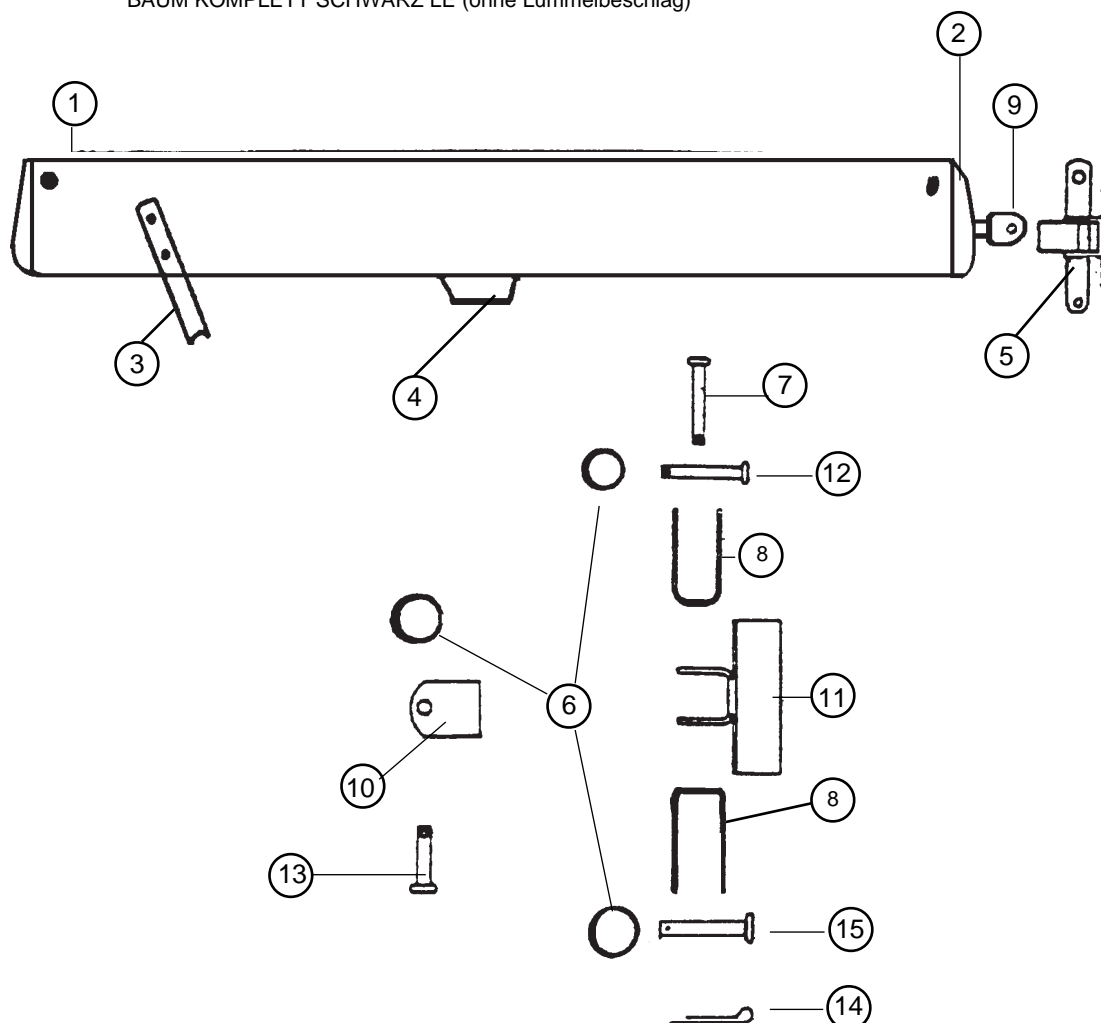
- 1-99220665(x10): Manille Lyre 6 mm  
Shackle 6 mm  
Mastschäkel 6 mm
- 2-14070530: Hauban  
Shroud  
Want
- 3- 99300141 (x10):Manchon D4  
Sleeve  
Hülse
- 4- 99300058 (x10): Cosse std  
Thimble  
Kausch Std
- 5- 99056230(x10): Axe percé lat.ridoir  
Clevis pin  
Bolzen für Wanteisen
- 6- 99220230 (x10): Anneau brisé  
Split ring  
Ringsplint
- 7- 99220650 (x5): Latte universelle ridoir  
Stay adjuster  
Wanteisen
- 8- 16060313 (x10): Chape de hauban  
Toggle  
Wanten Toggle
- 9- 99500369 (x10):Protège lattes ridoires  
Shroud adjuster cover  
Wantenschutz
- 10-14070510 : Etai câble  
Forestay  
Vorstag Kabel
- 14070515 : Etai câble gainé 14LE  
Forestay coated 14LE  
Vorstag 14LE
- 11- 99220660 : Manille lyre 4 mm  
(x10) Shroud shackle 4 mm  
Schäkel 4 mm
- 12- 14070520 : Bride STD  
Bridle STD  
Hahnepot STD



## HC 14

### Bôme/Boom/Baum

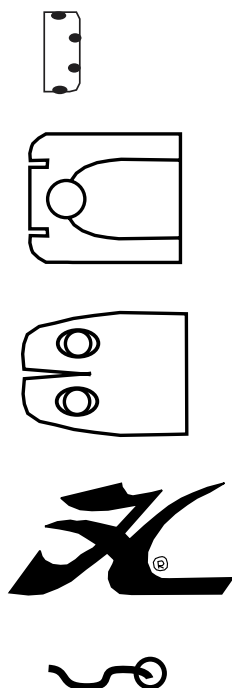
14012805 : BOME COMPLETE LE NOIRE (ss vit de mulet)  
 BLACK BOOM ASSEMBLY LE (without gooseneck)  
 BAUM KOMPLETT SCHWARZ LE (ohne Lümmelbeschlag)



- |                        |  |
|------------------------|--|
| 1 - 14000010:          | Embout de bôme noir arr.<br>Black rear boom end cap<br>Baumendkappe schwarz hinten |
| 2 - 14000005:          | Embout de bôme noir av.<br>black front boom end cap<br>Baumendkappe gebohrt vorne  |
| 3 - 14011830:          | Collier de bôme<br>block hanger<br>Baumbeschlag                                    |
| 4 - 14011841:          | Conduit coinçeur bôme<br>Barrel cleat<br>Klemme Baum                               |
| 5 - 14070350:          | Vit de mulet<br>Gooseneck assembly<br>Lümmelbeschlag                               |
| 6 - 99220230:<br>(x10) | Anneau brisé<br>Split ring<br>Ringsplint   |
| 7 - 14070354:          | Axe vit mulet<br>Clevis pin<br>Bolzen f. Lümmelbeschlag                            |
| 8 - 14070353:          | Cosse vit mulet<br>Shackle<br>Bügel f. Lümmelbeschlag                              |

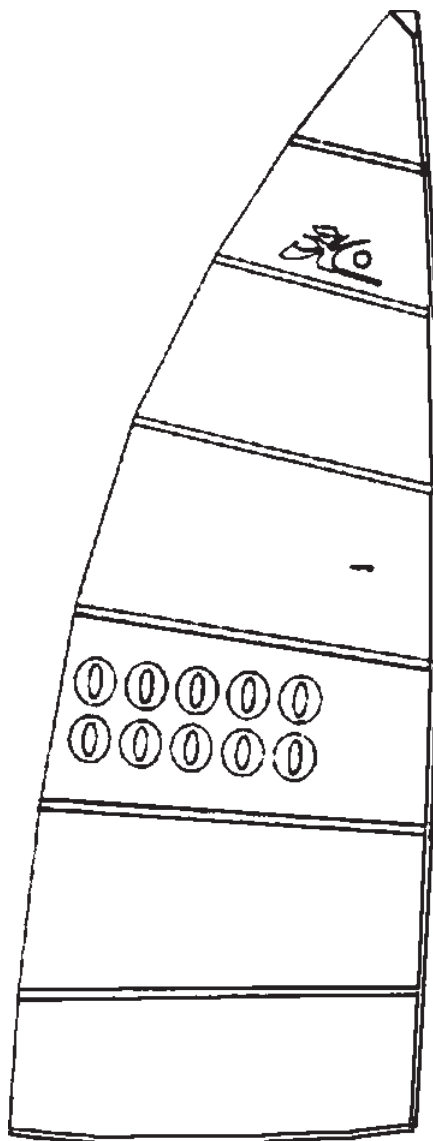
- |                         |   |
|-------------------------|---|
| 9 - 14011820:           | Ancrage vit mulet<br>Boom pin<br>Baumstück f. Lümmelbeschlag            |
| 10 - 14070351:          | Charnière centrale vit mulet<br>Vertex<br>Mittelstück f. Lümmelbeschlag |
| 11 - 14070352:          | Glissière vit mulet<br>Gooseneck slide<br>Gleiter Lümmelbeschlag        |
| 12 - 99220602:<br>(x5)  | Axe percé vit mulet<br>Clevis pin<br>Lümmelbeschlag Bolzen              |
| 13 - 99056230:<br>(x10) | Axe percé latte ridoire<br>Clevis pin<br>Bolzen f. Locheisen            |
| 14 - 99056247:<br>(x10) | Goupille vit mulet<br>Gooseneck cotter pin<br>Stift Lümmelbeschlag      |
| 15 - 18060316:<br>(x10) | Axe de flèche<br>Spreader pin<br>Salingachse                            |

**HC 14**  
**GRAND-VOILE/MAIN**  
**GROSSEGEL**  
**14033010 : blanc/white/weiss**  
**14033040 : lifou**



99504010:	Demi-butée latte GV Batten pocket protector Halb Anschlag GS-Latte
99500600 (x10):	Embout latter GV std Batten tip std Lattenkappe std
99500650 (x10):	Embout latte GV LE Batten tip LE Lattenkappe LE
99267286:	Autocollant "H" noir Black "H" sticker Aufkleber "H"schwarz
99500098 (x10):	Flamme de voile Telltail Telltail

14034020 (std):	Jeu de lattes
14034030 (le) :	Batten set Lattensatz



5

Standard	LE		
14034056	14034036		6
14034055	14034035		5
14034054	14034034		4
14034053	14034033		3
14034052	14034032		2
14034051	14034031		1

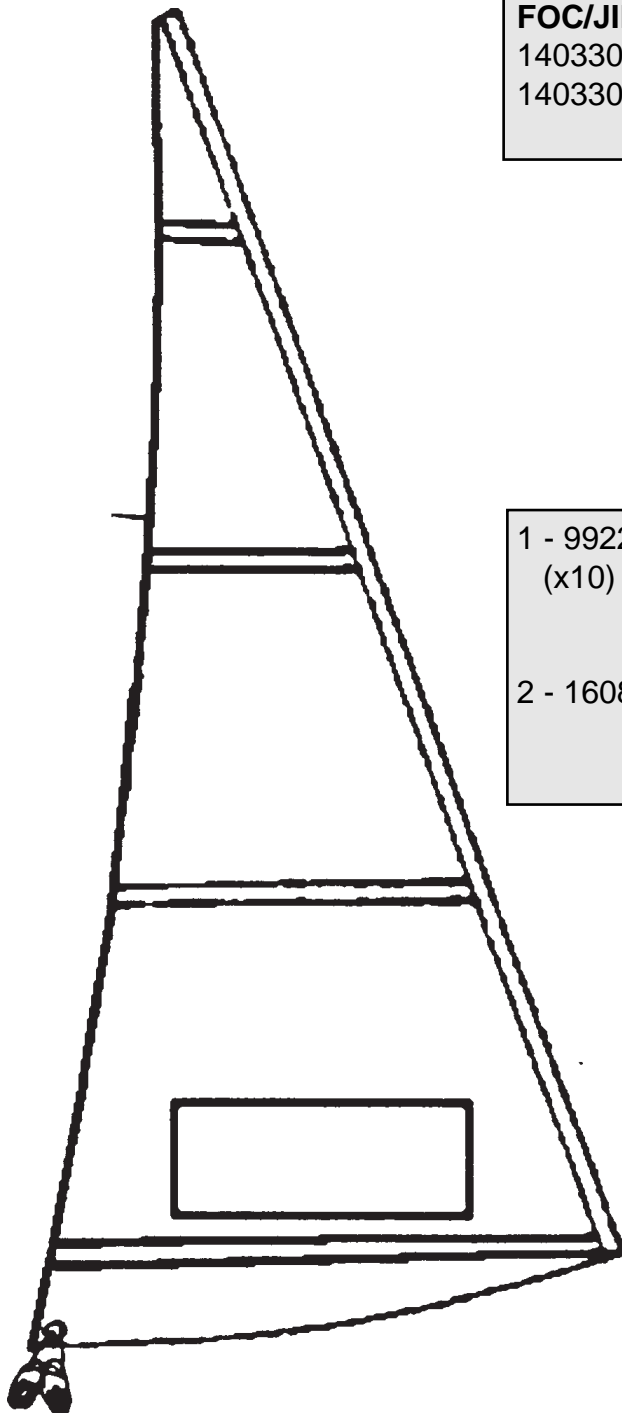
# HC 14

## FOC/JIB/FOCK

### FOC/JIB/FOCK

14033020 : blanc/white/weiss

14033030 : Lifou

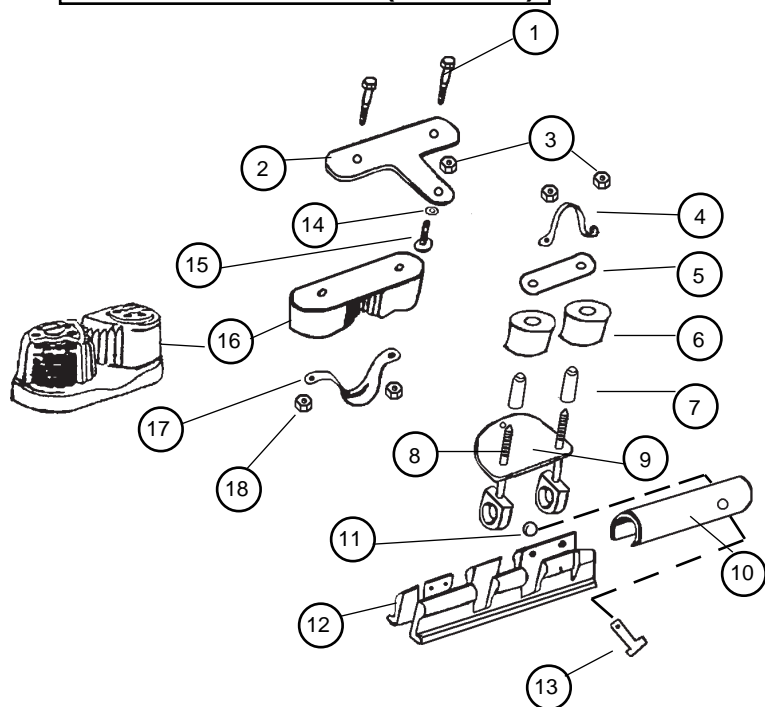


1 - 99220660 : Manille lyre 4 mm  
(x10) Shackle 4 mm  
Schäkel 4 mm

2 - 16080351 : Poulie point d'écoute de foc  
Jib clew block  
Fockumlenk-Block

14070470 : Ecoute de foc  
Jibsheet  
Fockschot

## 16080310 : CCT STD (obsolete)

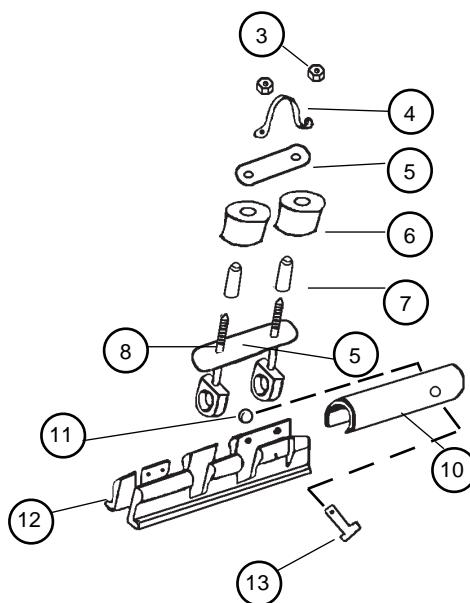


- 7 - 99220615 (x2): Entretoise CCT  
Stainless bushing  
Querriegel CCT
- 8 - 99220024: Vis violon  
Violon screw  
Bügelschraube CCT
- 9 - 14070321: Platine fixe  
Car sub plate  
Platte CCT
- 10 - 14070358 (x5): Axe Tube CCT  
Axe tube CCT  
Röhre f. Bolzen CCT
- 11 - 99220230 (x10): Anneau brisé  
Split ring  
Ringsplint
- 12 - 14070367 (x10): Demi-glissière  
half slide  
Halber Gleiter
- 13 - 99220602 (x5): Axe percé vit mulet  
Clevis pin  
Lümmelbeschlag Bolzen
- 14- 99220755 (x10): Rondelle Teflon  
Teflon washer  
Unterlegscheibe Teflon
- 15- 99056264 (x10): Vis Trl poelier art.  
Swing arm pivot screw  
Gelenkschraube CCT
- 16- 99500905 (x5): Taquet à bille  
Cam cleat  
Kugelklemme
- 17- 14070325 (x10): Pontet CCT  
Pad-eye CCT  
Bügel CCT
- 18- 99056237 (x10): Ecrou ind. Taquet  
Nylstop Nut  
Selbstsichernde Mutter

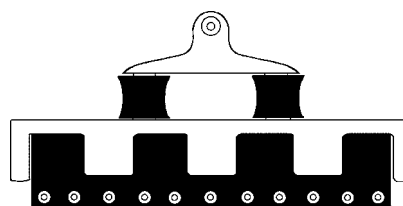
## HC 14 CCT STANDARD & TURBO

- 1 - 99220900(x10): Vis taquet coinreur  
Screw  
Schraube für Klemme
- 2 - 14070316: Platine articulée  
Deck plate  
Bewegliche Platte
- 3 - 99056238 (x10): Ecrou indessérable 6  
Nylstop nut 6  
Selbstsichernde Mutter 6
- 4 - 14070325 (x10): Pontet CCT  
Pad-eye  
Bügel
- 5 - 14070322: Platine support réa  
Sheave plate  
Platte Hinten CCT Rolle
- 6 - 14070111: Réa nylon  
Nylon sheave  
Rolle nylon

## 16080311 : CCT LE



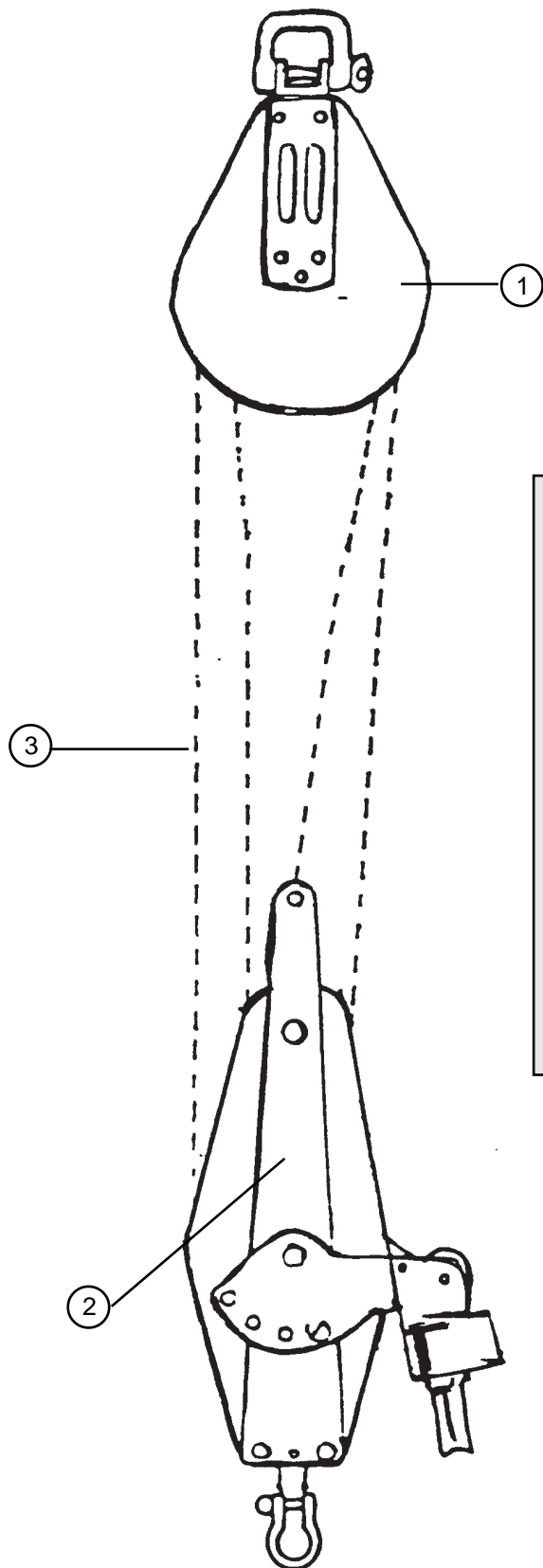
## 99501524 : SSI (HC 16 Race et LE Race)



99501529 : Glissière+axe et bague / Slide+pin and ring

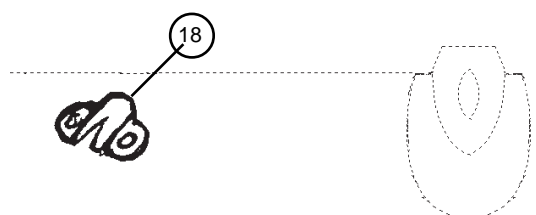
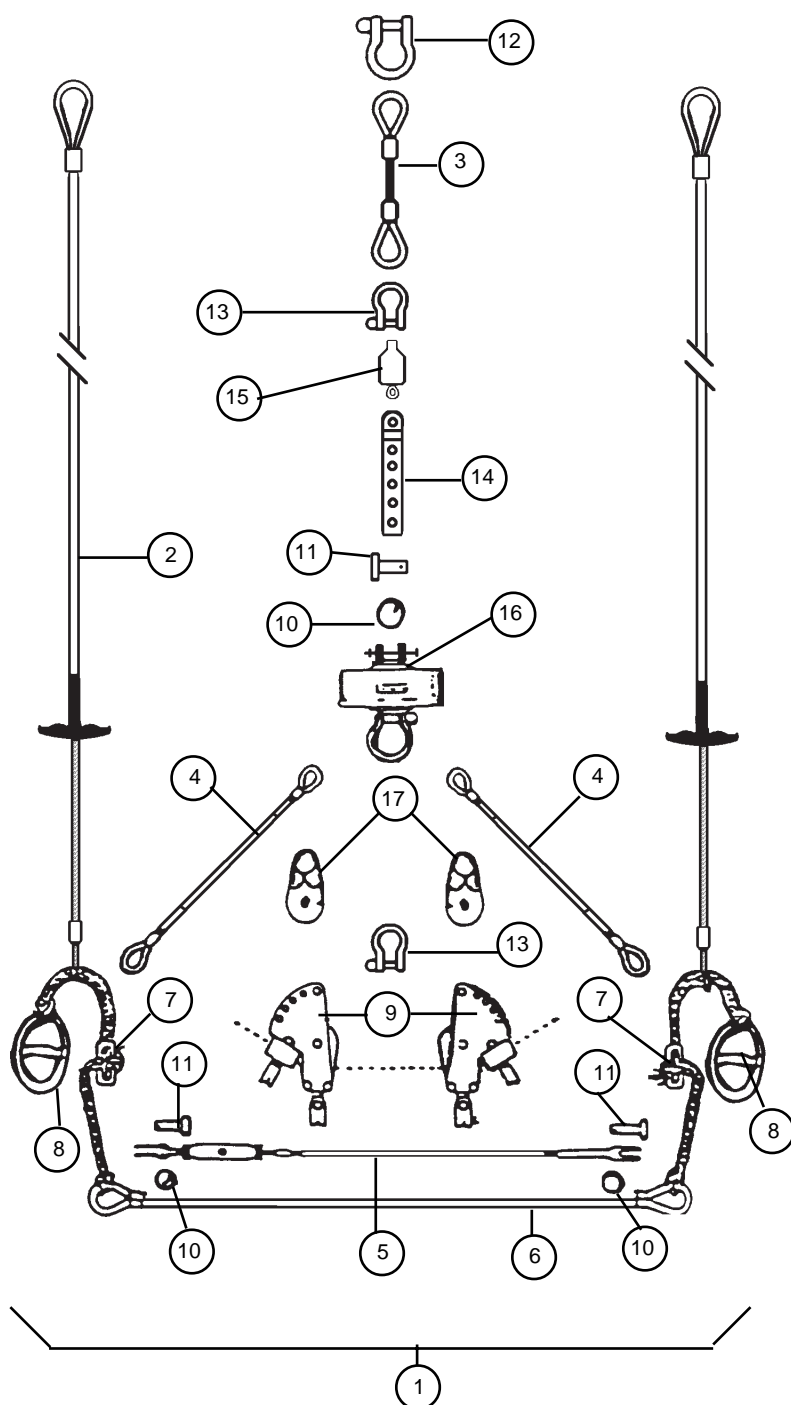
## HC 14

### Poulies/Blocks/Blöcke



- |                |   |
|----------------|---|
| 1 - 16080353:  | Poulie triple Sailspeed<br>Sailspeed upper block<br>Dreifacher Block Sailspeed                            |
| 2 - 16080370 : | Poulie winch triple Sailspeed<br>(Std) Ratchet block threefold Sailspeed<br>Sailspeed Knarrblock dreifach |
| 99500132:      | Poulie winch triple<br>(LE & Turbo) Threefold ratchet block<br>Dreifacher Knarrblock Harken               |
| 3 - 14070420 : | Ecoute de grand-voile<br>Mainsheet<br>Großschot   |

## HC 14 TURBO KIT



Traverse avant/Front crossbar/Vorderholm

- |                |   |
|----------------|---|
| 1 - 14070556 : | Kit turbo sans martingale et sans foc<br>Turbo kit w/o striker rod. and w/o jib<br>Turbokit ohne Unterzug ohne Fock |
| 2 - 14070575 : | Cable trapèze<br>Trapeze wire<br>Trapez Kabel   |
| 3 - 14070550 : | Estrope<br>Pig tail<br>Pigtail  |
| 4 - 14070540 : | Brides<br>Bridles<br>Hahnepot   |
| 5 - 14070570 : | Cable transversal<br>Jib block support wire<br>Turbo Kabel  |
| 6 - 99056260 : | Sandow trapèze<br>(x10)<br>Trapeze shock cord<br>Gummistrop Trapez  |
| 7 - 18060314 : | Double anneau<br>(x10)<br>Rope Lock<br>Trapezstopper  |
| 8 - 99500031 : | Poignée J&H (paire)<br>(x10)<br>J&H Trapeze handle (x 2)<br>J&H Trapezgriff   |
| 9 - 14070390 : | Poulie écoute de foc<br>Jib sheet block Sailspeed<br>Fockschotblock Sailspeed                                       |
| 10- 99220230 : | Anneau brisé<br>(x10)<br>Split ring<br>Ringsplint   |
| 11-99056230 :  | Axe percé latte ridoir<br>(x10)<br>Clevis pin<br>Bolzen für Locheisen gebohrt                                       |
| 12-99220210 :  | Manille lyre 8 mm<br>(x10)<br>Shackle 8 mm<br>Schäkel 8 mm  |
| 13- 99220660 : | Manille lyre 4 mm<br>(x10)<br>Shackle 4 mm<br>Schäkel 4 mm  |
| 14-99220650 :  | Latte ridoire<br>(x5)<br>Stay adjuster<br>Locheisen   |
| 15- 14070591 : | Pivot étai de foc<br>Forestay swivel<br>Fockvorstagwirbel   |
| 16- 14060150 : | Enrouleur<br>Jib furling assembly<br>Fockroller   |
| 17- 16080351 : | Poulie point d'écoute de foc<br>Jib clew block<br>Fockumlenkblock   |
| 18- 99500415 : | Conduit coinceur<br>Jam Cleat<br>Klemme Vorderholm  |

14070535 : Hauban HC14 Turbo  
Shrouds HC14 Turbo  
Wanten HC14 Turbo

14061671 : Martingale cable 14T  
Dolphinstriker cable 14T

14061690 : Attache martingale  
Dolphinstriker fixation

14070580 : Kit trapèze 14LE (2 cables)  
Trapeze kit 14 LE (2 cables)  
Trapezsatz 14LE (2 Käbel)